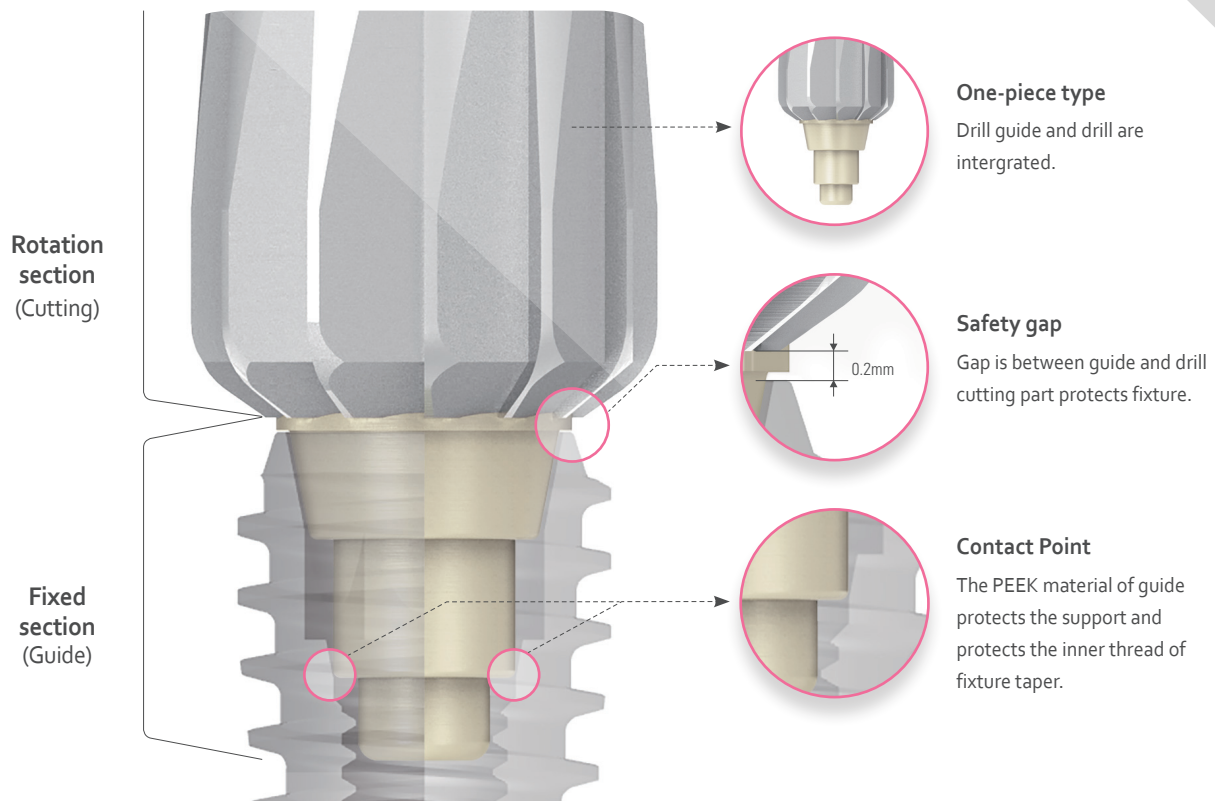


# BONE PROFILE DRILL

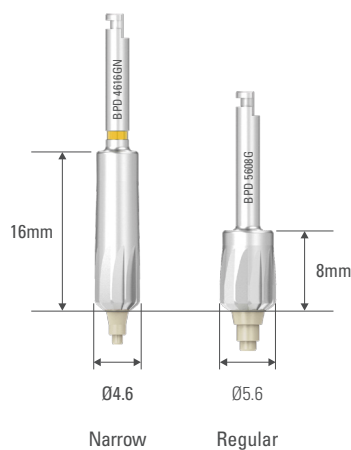


# BONE PROFILE DRILL



## Specification \

- Guide-integrated drill removes the inconvenience of combining / separation guide
- While drilling, the guide support without turning so that protects the connical Taper of fixture.
- Shortened cutting part of the drill improves workability and stability while drilling. (Regular)

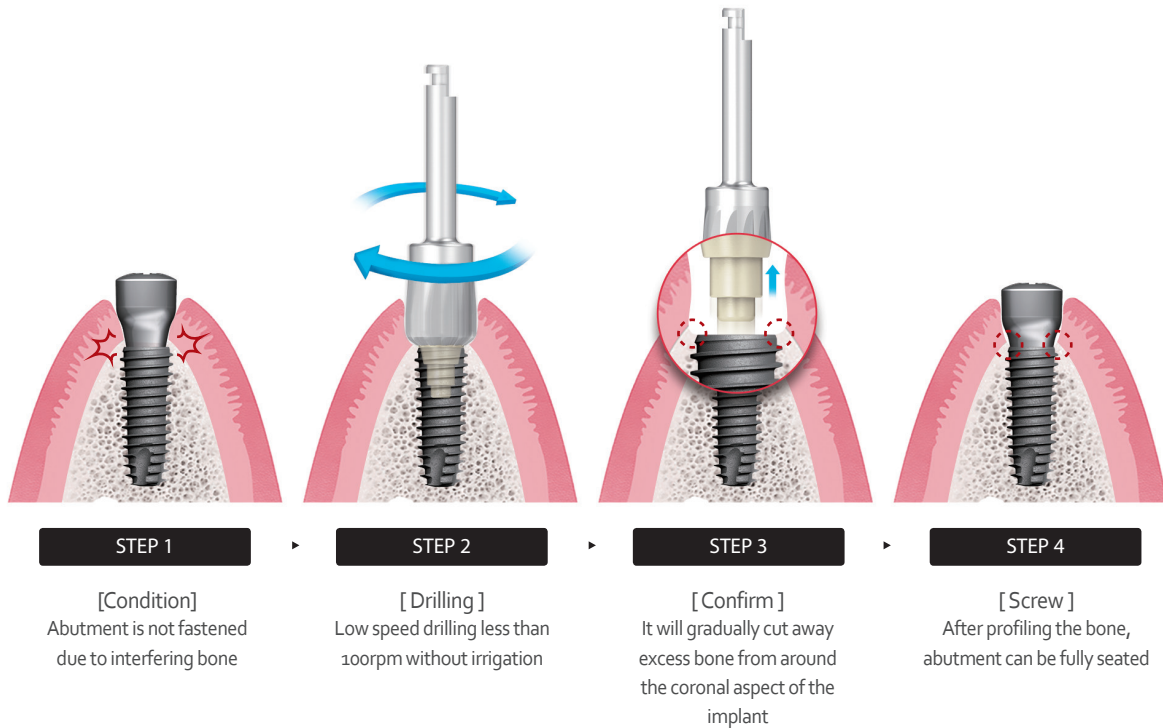


Products	Code
Bone Profile Drill (Narrow)	BPD 4616GN
Bone Profile Drill (Regular)	BPD 5608G

**Note** Low speed drilling less than 100rpm without irrigation.

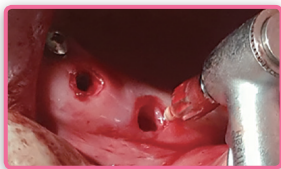
## Directions for use \

- When connecting abutment (healing) after implant placement, It is necessary to contour the bone for proper seating of the abutments.(to contour bone to allow for a wider emergence profile restoration)
- To flatten and **remove bone that has grown around** or over an implant which impedes its restoration. (When use a Abutment(with Healing Abutment))
- When abutment is completely tightened **transmucosal recovery time is reduced.**



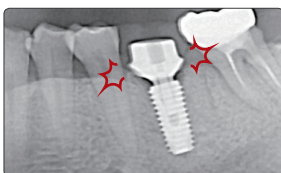
## Clinical Case \

### Oral image

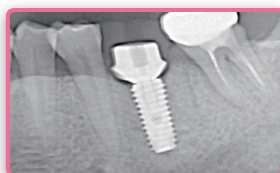


| After use of Bone Profile Drill

### Panorama image



| Abutment is not fully seated due to interfering bone.(#36)



| After use of Bone Profile Drill



| Abutment is not fully seated due to interfering bone.(#36)



| After use of Bone Profile Drill



**DIO** IMPLANT

[www.dioimplant.com](http://www.dioimplant.com)