



# ***UFII Digital Abutment***

**DIO<sup>®</sup> IMPLANT**

# UFII Digital Abutment

MORE developed than stock abutments,  
MORE convenient than customized abutments!

---

## **CEJ Cemento Enamel junction**

The Digital Abutment was created based on the CEJ  
and thus has an excellent aesthetic appearance.



# What makes UFII Digital Abutment so special?

	Stock Abutment	Customized Abutment	Digital Abutment
Making process	Shorter	Longer	Shorter
Time-saving	Increase the chair time	Increase the chair time	Decrease the chair time
Using library	Yes	No	Yes
Customized for the patient's gingiva	No	Yes	Yes
Post area	Small	Wide	Wide
Getting omitted prosthesis	High chance	Low chance	Low chance
Cost	Low cost	High cost	Low cost



Easy to use like stock abutment,  
customized for the individual like  
customized abutment

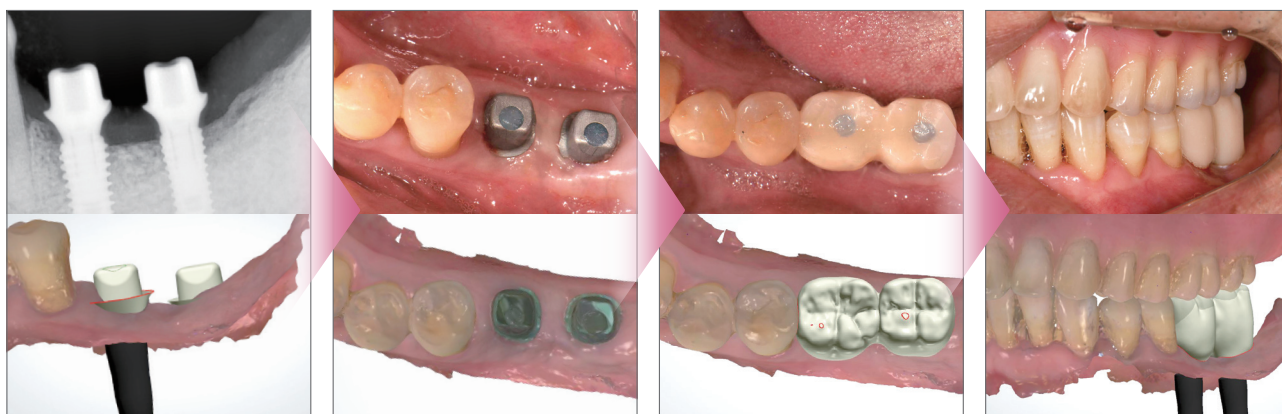
**All in One!**  
**UFII Digital Abutment**



# Clinical benefits of UF II Digital Abutment

## Fabricating a prosthesis using Digital Abutment

The ideal Digital Abutment will be determined during the digital design process and sent to the doctor with the surgical guide.



## Multi-purpose of Digital Abutment



### Function Scan adapter

Proprietary Protect Cap for Digital Abutment enables gingiva accurate intraoral scanning.



## UFII Digital Abutment **Lower Cost** And **Decrease The Chair Time**

### Optimized design

An abutment optimized for immediate loading during flapless surgery.

### Convenience

The convenience of not needing to detach the abutment when mounting the final prosthetic after implant surgery

### High accuracy

Make high accuracy prosthesis designed by intraoral scan and library



## Scan Adapter Function

### Marking

<b>L25</b> · <b>L</b> Lower Incisor	2 Cuff Height	5 Post Height
<b>U25</b> · <b>U</b> Upper Incisor	2 Cuff Height	5 Post Height
<b>C25</b> · <b>C</b> Canine	2 Cuff Height	5 Post Height
<b>P25</b> · <b>P</b> Pre-Molar	2 Cuff Height	5 Post Height
<b>M25</b> · <b>M</b> Molar	2 Cuff Height	5 Post Height

#### Attention

0.5 unit marking exempted in accordance with marketing  
ex) Cuff 2.5 = 2 / Post 5.5 = 5



Protect Cap  
Lock-Groove

Shoulder Margin

## UF II Connection



UF II  
Connection



UFII Narrow  
Connection



Non-Hex



Lower Incisor



Upper Incisor



Canine



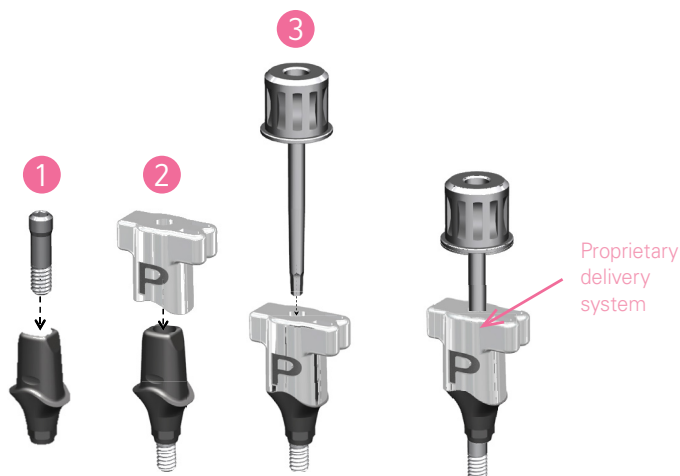
Pre-Molar



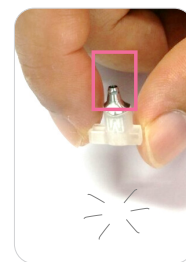
Molar

	Lower Incisor	Upper Incisor	Canine	Pre-Molar	Molar
Cross Section					
Cervical Margin Cross Section					
Facial Side	→	→	→	→	→
Connection	UF(II) Narrow	UF(II) Narrow / UF(II)	UF(II)	UF(II)	UF(II)
Cervical Margin Dimension (Mesiodistal x faciolingual)	5 X 5.2	6.1 X 5.7	5.3 X 6.3	5.8 X 6.8	7.3 X 7.8
Ratio (%)	70%	70% / 85%	85%	85%	85%

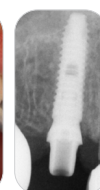
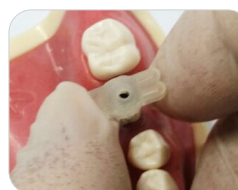
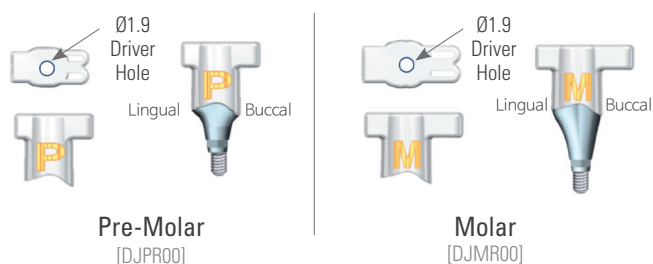
## Connecting Hex is easy and simple



Easier delivery to the intraoral area (Only require the driver)



Carrier prevents the screw from dropping into the patient's throat to mouth



Easier handling and a more precise connection

## Digital Abutment Line-Up

N			N			R			R			R			R			
No.	Cuff	Post	Lower Incisor	Upper Incisor	Upper Incisor	No.	Cuff	Post	Canine	No.	Cuff	Post	Pre-Molar	Molar	No.	Cuff	Post	
1	1.5	4.0				2	2.5	5.5		1	1.5	4.0			1	1.5	4.0	
2	2.5					3	3.5	2		2.5	2				2.5			
3	3.5					7	2.5	7.0		3	3.5				3	3.5		
4	4.5					8	3.5	4		4.5	4				4.5			
5	5.5					5.5										5		1.5
6	1.5									6	2.5	6	2.5					
7	2.5									7	3.5	7	3.5					
8	3.5									8	4.5	8	4.5					
9	4.5	7.0												5		1.5	7.0	
10	5.5									6	2.5	6		2.5				
										7	3.5	7	3.5					
										8	4.5	8	4.5					

