

Precautions for scanning to progress DIONavi.

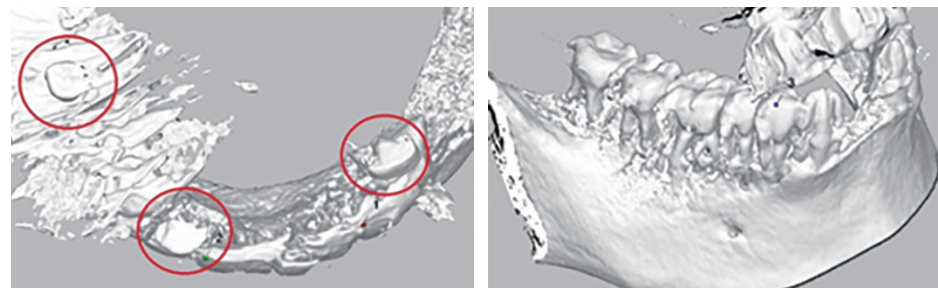
Following precautions must be followed in using the DIONavi. solution.

Check 1

Distortion of CT scan

A precise CT scan is required to use the DIONavi. solution.
 Regular (every 3 months or quarterly) calibration of the CT machine by the manufacturer is recommended.

※ If teeth or markers are distorted in the CT as shown on the right, it is necessary to check and correct them.



Check 2

Check scan

A precise intraoral scan is required to fabricate a well-fitting guide.
 Check for any partial or distorted images before sending the scan to a planner.

※ Press the 'Surface' tab to view the scan in black and white to detect distortions.

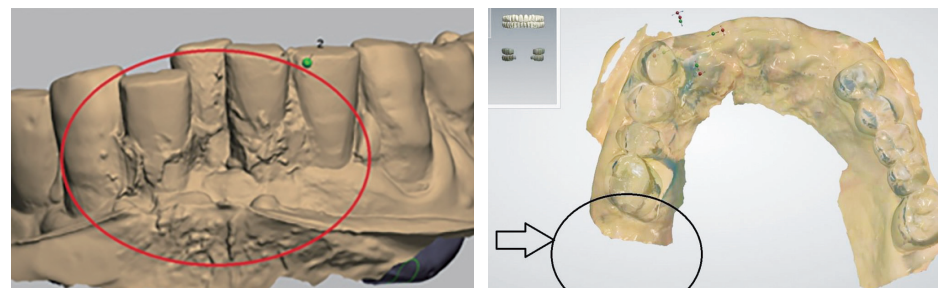


Check 3

Manufacturing a precise plaster model

A good plaster is a mandatory premise in making a well-fitting guide.

※ Silicone impression material is recommended for fabricating models.



※ If you have any questions regarding a CT scan or an intraoral scan, please contact your DIO Implant sales representative.

Precautions to take before taking CT and intraoral scans

To avoid any delays or remakes, check the precautions carefully and always take another scan if the scan is distorted.

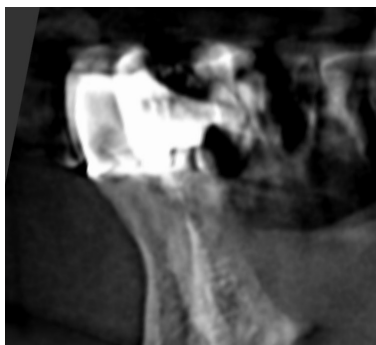
Check 1 CT reiteration

Possible causes

Reiteration of CT images due to movement of patient.

Solution

Re-scanning and prevent patient from moving.



Check 2 CT scattering

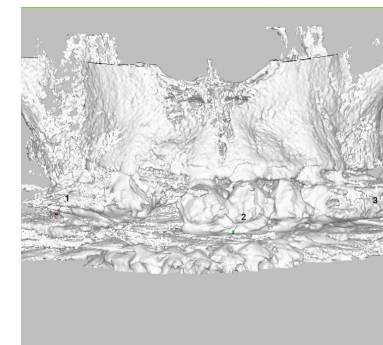
Possible causes

Metal artifact or prosthesis.

Solution

Attach resin or a fiducial on the prosthesis and re-take the scan.

* Refer to p.15 for a more detailed instruction of attaching a fiducial.



Check 3 CT distortion

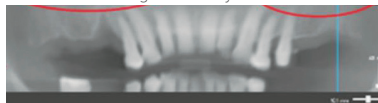
Possible causes

Anatomical structure (Maxillary molar area: Sinus / Mandibular molar area: Nerve alveolaris inferior) is partially scanned and some areas is missing in the scan.

Solution

Need to reset the CT settings.

Sinus Case - Cutting of maxillary sinus



Mandibular case - Cutting of mandibular nerve



Anterior tooth area case - Cutting of anterior tooth area



Check 4 Wearing of denture or splint (In edentulous case)

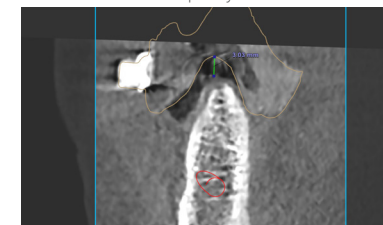
Possible causes

Matching point cannot be merged due to poor seating of a denture or splint.

Solution

Retake the CT with a closed bite after seating the denture or splint intraorally.

Denture not seated completely



Splint not seated completely

