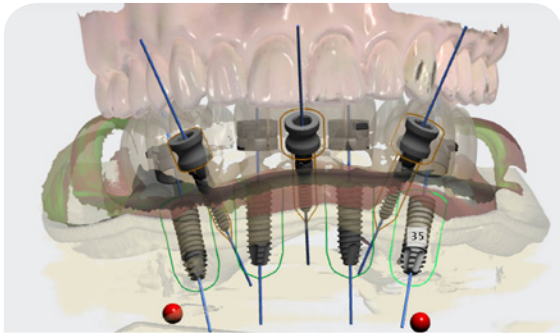


Why DIONavi. Full Arch?

01 It is accurate with digital.

Taking impression by using oral scanner and CBCT can reduce errors. Patient mouth can be checked minutely because it uses data taking from them.



02 Make the most comfortable prosthetics for patient.

While a patient uses a temporary denture, the denture design is modified suitably with patient's oral structure for the most comfortable design. It is usually hard to convert the temporary denture information to a provisional bridge exactly same with an analogue workflow. However, the DIONavi. Full Arch digital workflow allows all patient records to be converted to a provisional bridge. It can make sure that the prosthesis design is the most suitable for patient's oral condition while the patient uses the provisional bridge. Thereby, a final restoration made by the most comfortable design for patient is completed.



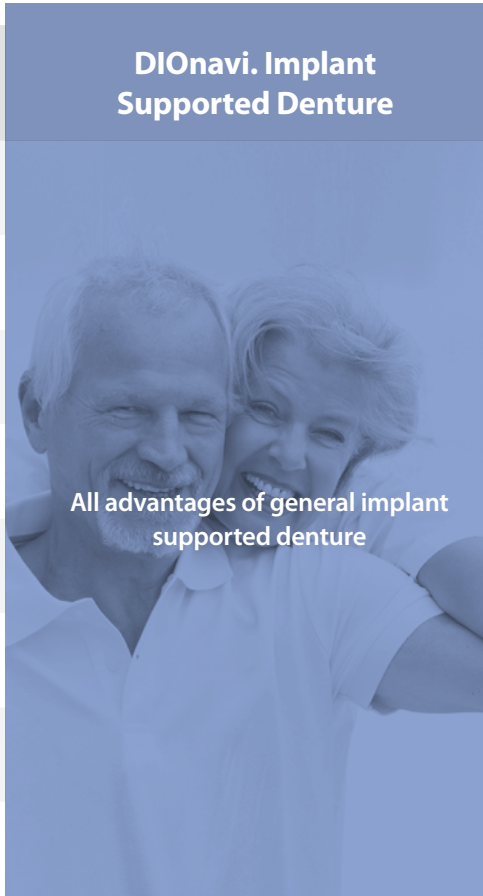
DIO IMPLANT

An Investment That Can Last A Lifetime



You Can Enjoy Your Favorite Foods Again With **DIONavi. Full Arch**

The most comfortable implant-supported denture for you

	Removable Denture	General Implant Supported Denture	DIONavi. Implant Supported Denture
Bone quantity and quality	Reduce	Preserves	 <p>All advantages of general implant supported denture</p>
Lifespan	3-4 years	Semi-permanent	
Function	Doesn't function as natural teeth	Feel like your own natural teeth	
Support of facial structures	Decreases over time	Firm support	
Stability	Unstable and unreliable	Strong and stable	
Denture adhesives	Need	No need	
Bite	Difficult	Strength of chewing	
Smile	No confidence	Confidence	
Immediate prosthesis		Need time	
Surgery		Pain, swelling, bleeding with flap surgery	
In the case of fracture		Redo it from the taking impression	Ready-made
			Flapless, minimal pain, maximum success rate of implant surgery with flapless surgery
			Can be remade without a visit

