

DIONavi.



Accurate and fast with
3D simulated operation



Reduced stress
from prosthetics!

**Dental clinics,
attached with digital wings.**



Expanded scope
of operation!



Time saving!





NO! Water, NO! Noise,
NO! Incision, NO! Heating



Minimal incision!
Reduced pain!

**Patients,
attached with wings of comfort.**



OK for patients
with systemic diseases!



Fast recovery!





Digital implant DIONavi. is **Different!**

Fully Digitalization_ DIONavi.

HIGH ACCURACY

- Removes inconvenience and error of analog method

SCAN > DESIGN > MANUFACTURE > PRODUCT

- Digitalization of all processes from Input Data to Output Product
- DIONavi.Full Digital Leveling Error : Average 0.26°

Journal of Korean Academy of Prosthodontics

- Accuracy assessment of implant placement using a stereolithographic surgical guide made with digital scan,
2015, Professor Seung-Mi Jeong

DIVERSE INDICATION

- Provides perfect solutions to different cases

Edentulous | Edentulous | Sinus lift | Metal artifact |

Immediate implantation after tooth extraction | Case with narrow bones |

Case with narrow interdental space | Posterior region with small mouth opening |

Free end case | Prosthetics applied immediately after implantation on low bone level

STRONG SAFETY

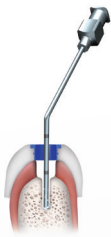
- Drilling of different lengths - Accuracy + Safety UP & Slip prevention tool



- Low speed drilling and stepwise injection (prevents bone heating)

50RPM

Heat reduced by low speed drilling,
noise reduced by no injection



Prevents bone heating and
removes particles in bone cavity
by injection in each drill stop
(after removal of drill)

- Easily secures sight of operator
by no injection while drilling
and low speed drilling

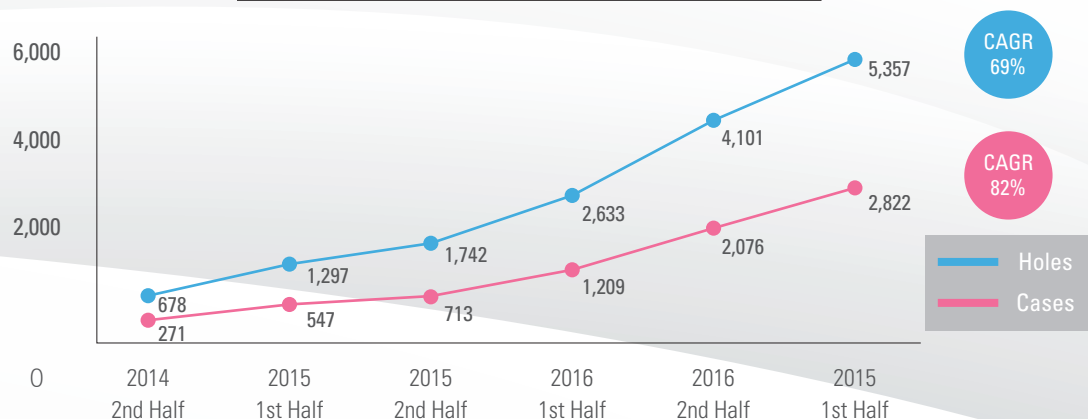


VS



VERIFYING GUIDE SYSTEM

Usage trend (monthly average) of DIONavi.



Digital Implant DIONavi.

LINE-UP DIONavi.



Fixture Size	Narrow		Regular					Wide		
DIONavi. Sleeve Size	Narrow		Regular					Wide		×
	3.0	3.3	3.8	4.0	4.5	5.0	5.5	6.0	6.5	7.0



Regular Case

DIONavi. Master Kit

Off-Set height : 9 / 10.5 / 12mm

[CODE : UF 05]



Wide Case

DIONavi. Wide Kit

Case with small mouth opening / Case with posterior region
Off-Set height : 8 / 9.5mm

[CODE : UF 11]



Narrow Case

DIONavi. Narrow Kit

Case with narrow bones / Case with narrow interdental space
Off-Set height : 12mm

[CODE : UF 14]



Sinus Case

DIONavi. Master Kit &
DIONavi. Sinus Crestal Approach Kit

Hydraulic sinus lifting kit

[CODE : SMK 02]



Edentulous Case

DIONavi. Master Kit & DIONavi. Special Kit

Free end case / Case of immediate implantation after tooth extraction
Including 15mm final drill

[CODE : SGF 02]

Digital Implant DIOnavi.

PATENTED SOLUTIONS DIOnavi.

● Metal Artifact



Difficulty of data matching due to CT scattering

● Free End Case

Difficulty of matching implant site /
Difficulty of bite taking

● Edentulous Case

Use of half-digital with plaster case
because of no data matching
(reduced accuracy)

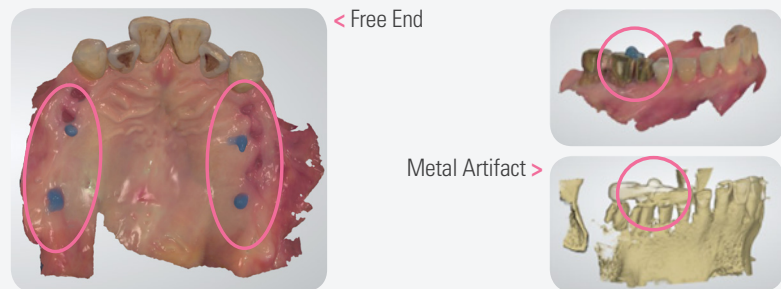
Image	Name
	Marker CODE : SGM 5040
	Flow resin (radiopacity) (CHARMFIL BLUE resin recommended) CODE : ORCFFB 01

When attaching marker

It can be attached easily by using
medical adhesive (Histoacryl)

CODE : 1050060

and flow resin (Charmfil).



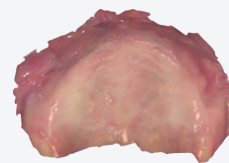
Scan Retractor

Fully Digitalization Workflow for
Edentulous Case

Upper jaw

Lower jaw

Before using
scan retractor



Difficulty of checking boundary of
attached gingiva
and alveolar mucosa



Cannot use oral scan due to
movement of tongue

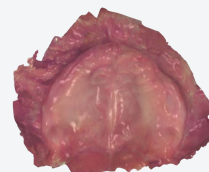
After using scan
retractor



Upper jaw
CODE: SCANR 01S



Lower jaw
CODE: SCANR 02S



Accurate recognition of upper jaw opening,
control of tongue movement (lower jaw),
reference point of oral scan



DIO^o IMPLANT